

PAC440D5412-ON Power Module



Introduction

PAC440D5412O-ON Open frame AC-DC POE power module has 90 to 290Vac wide input voltage, -53V and 12V dual isolated outputs, total rating output power 440W (12V/60W; -53Vdc /380W). The module is environmental air cooling. Surge protection meet IEC61000-4-5 and ITU-TK.21 standard. Be suitable for switches, routers, access equipments and so on, that need dual power supply of 12V and 48V.

Specification

	Model	Parameter	Notes & Conditions
Output characteristics			
Output voltage range	PAC440D5412-ON	-51.41 ~ -54.59V 11.64 ~ 12.36V	-
Output power	PAC440D5412-ON	-53.5V@380W 12V@60W	-
Output line regulation	PAC440D5412-ON	1%Vo	Vin=90 - 264 VAC; Po=440W
Output load regulation	PAC440D5412-ON	3%Vo	Vin=220 VAC; Po=0 - 440W
Output ripple and noise (PK-PK)	PAC440D5412-ON	-53.5V@500mV 12V@600mV	Oscilloscope bandwidth: 20 MHz
Input characteristics			
Operating input voltage	PAC440D5412-ON	90 - 290 VAC@50/60Hz	-
Maximum input current	PAC440D5412-ON	5.3A	Vin=220 VAC; Po=440W
Power factor	PAC440D5412-ON	0.98	Vin=220 VAC; Po=440W
Protection characteristics			
Input UVP	PAC440D5412-ON	Turn on: 90V AC Turn off: 85V AC	Hysteresis: 5.0V
Output OVP	PAC440D5412-ON	-57 ~ -60V 13.5 ~ 16V	Hiccup
Over current Protection	PAC440D5412-ON	-53.5V@8 - 10A 12V@6 - 7.5A	Hiccup
Over temperature Protection	PAC440D5412-ON	75°C	Self-recovery
Absolute maximum ratings			
Operating ambient temperature	PAC440D5412-ON	-25 - 55°C	-
Storage temperature	PAC440D5412-ON	-40 - 70°C	-
Other characteristics			
Surge	PAC440D5412-ON	Line to earth: ±6 kV Line to line: ±6 kV	IEC61000-4-5/ITU-TK.21
Mean time between failures (MTBF)	PAC440D5412-ON	0.25 million hours	Telcordia SR332, Vin=220VAC, 100% load, TA=25°C



Features

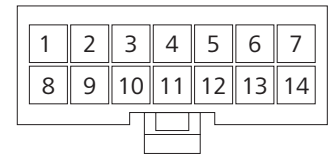
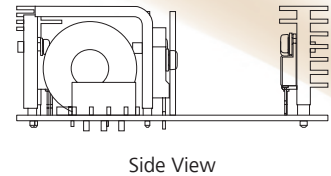
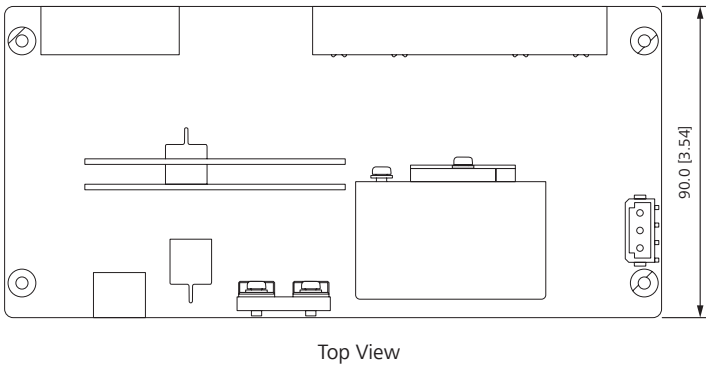
- Over current protection
- Short circuit protection
- Output overvoltage protection
- Over temperature protection
- Suitable for the TT, TN, IT power supply system

Model Selector

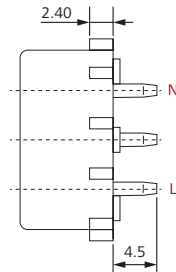
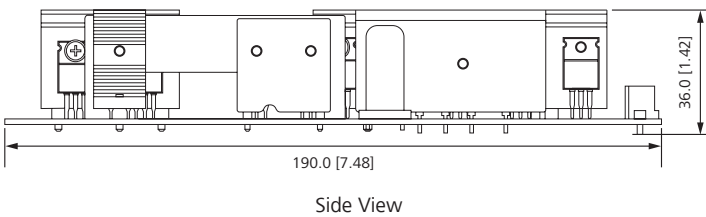
Model	Input Voltage	Output Voltage	Output Current	Output Power	Efficiency
PAC440D5412-ON	90 - 290 Vac	-53.5V/12V	7.2A/5A	440W	91.5%

Mechanical Diagram

Unit: mm [in.]



Output connector: Molex (39-01-2145)



Input connector: Senda Zhejiang (SD W50801-3A-HW)

Pin definition of output connector:

Pin	Definition	Colour	Description
1	-53V	Blue	Output: -53 V DC
2	-53V	Blue	Output: -53 V DC
3	NC	-	Keeping float
4	alarm	Green	AC input power off alarm (H:OK; L:abnormal)
5	+12V	Red	Output: 12 V DC
6	+12V	Red	Output: 12 V DC
7	+12V	Red	Output: 12 V DC
8	RTN(-53V)	Yellow	RTN(-53V)
9	RTN(-53V)	Yellow	RTN(-53V)
10	NC	-	Keeping float
11	POWER_GOOD	Gray	Indicator whether the 12V/-53V output voltage is OK (H:OK; L:abnormal)
12	12V_GND	Black	12V GND
13	12V_GND	Black	12V GND
14	12V_GND	Black	12V GND

Tolerance
190.0±0.5[7.48±0.02in]
90.0±0.5[3.54±0.02in]
36.0±1.0[1.42±0.04in]